

IMP SERVER



Features

Compatible with both legacy (XP) and current versions of Windows

32-bit and 64-bit versions are available

Compatible with the OPC Data Access v1.0 and v2.0 standards

Compatible with the Excel RTD standard

Compatible with **3595 4A/4B/4C plug-in cards, 3595 4U USB S-Net, 3595 9X Ethernet S-Net** interfaces.

Supports multiple S-Nets on a single PC using multiple **3595 4U USB S-Net** interfaces

Interrogation of IMP S-Net network for module and reading of configuration from S-Net

Slow and fast acquisition speeds

Integration time

Temperature result setting

Calibration polynomials

Diagnostic channels and debug output for monitoring S-Net communications

Full traceability of all configuration changes to IMP OPC server

Dynamic reconfiguration of IMP channels.

Support for 3595 1A/1B/1C/1D/1E/1H/1J and 2A IMP module types and all associated measurement modes.

- 35951A IMP - 20 Channel Analog FET
- 35951B IMP - 10 Channel Strain Gauge
- 35951C IMP - 20 Channel Analog Reed Relay
- 35951C1 IMP - 20 Channel Analog Reed Relay
- 35951D IMP - 4 Channel Analog Output
- 35951E IMP - 20 Channel 500 Volt Isolation
- 35951H IMP - 20 Channel Universal
- 35951Q1 IMP - 20 Channel Universal
- 35951J IMP - 20 Channel Universal with 500 Volt Isolation
- 35952A IMP - 20 Channel Digital Input/Outputs
- 35952B IMP - 32 Channel Digital Event and Status Input/Outputs

Ambient or external temperature reference

Measurement modes

Thermocouple checking

Event logging to RTM compatible text files



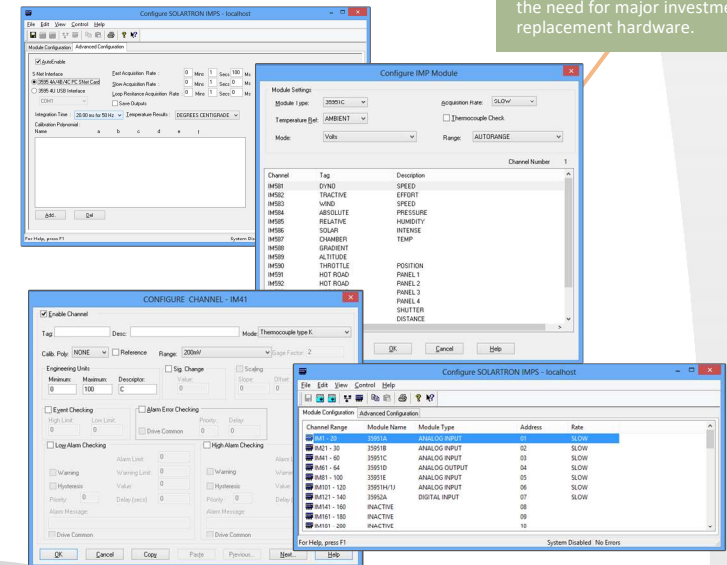
Key Benefits

The IMP server connects third party systems to Solartron S-Net.

It allows Excel to be used as a data monitoring tool.

The system does not require custom programming of your software or the replacement of your software.

Solartron IMP hardware is supported on modern PC platforms into the future, without the need for major investment in replacement hardware.



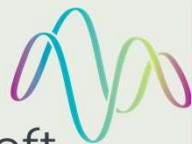
What is IMP Server?

The **Measuresoft IMP Server** is an OPC Data Access and Excel RTD Server for the Solartron IMP range.

The **Measuresoft IMP Server** comes equipped with desktop configuration and monitoring tools, making network setup an effortless task. Setting up the IMP network, modules and channels is straightforward and user friendly.

Configuration is then used by the server to issue commands to the S-Net via a special interface installed in the PC, which initiates measurement of nominated channels. During scanning operations, the **Measuresoft IMP Server** manages all aspects of IMP and S-Net communications, initializing & programming the IMPs, commanding them to take measurements, receiving the incoming channel data and constantly monitoring the system for errors.

OPC Data Access and Excel RTD Server

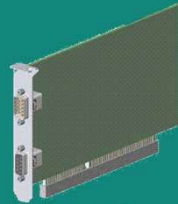
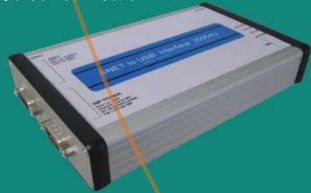


measuresoft

Also available from Measuresoft:

3595-4U SNET-USB Interface

The 3595-4U Interface provides the capability for any computer to communicate with IMPS SNET via USB connection.



3595-4C PCI Interface Card

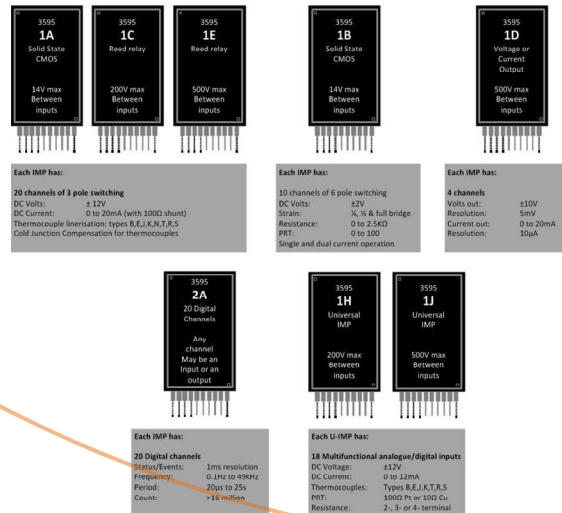
The 3595-4C PCI Interface allows a PC, with a PCI expansion slot to communicate with the SNET system.

IMP Replacements

Measuresoft offer new IMP Modules. The current selection includes the 3595 1C1 which replaces the 3595 1C - 20 Channel Analogue Reed Relay and the 3595 1Q1 which replaces the 3595 1Q1. Measuresoft also supplies the 35951H IMP - 20 Channel Universal and which can perform the measurement modes other than strain gauge of the 3595 1B.



IMP Type	3595 1A	3595 1B	3595 1C/1E	3595 1D	3595 1H/1J	3595 2A
No. Channels	20	10	20	4	18 2	20
Volts dc	I	I	I		I	
Resistance		I			I	
Current dc	I		I		I	
Thermocouple	I		I		I	
PRT (RTD)		I			I	
Strain		I				
Status					I	I
Frequency					I	I
Period					I	I
Events					I	I
Counts					I	I
Digital O/P					I	I
Current O/P				I		
Voltage O/P				I		



'OPC Data Access and Excel RTD Server for the Solartron IMP Range'

2626 South Loop West, Suite 620,
Houston, TX, 77054,
USA
Tel +1 281 969 7529

www.measuresoft.com
Partnership Courtyard,
Ramparts Road,
Dundalk, Ireland
Tel: +353 42 932399

sales@measuresoft.com

