

ALPHA SERVER



What is the Alpha Server?

The Measuresoft Alpha Server is an OPC Data Access and Excel RTD server for the Alphascan measurement module range. The server comes equipped with desktop configuration and monitoring tools making network setup a straightforward task. Setting up the Alpha network, modules and channels is easy and user friendly. Configuration is then used by the server to issue commands to the Alpha via a RS232 for single module operation or via RS485 for multiple module operations. During scanning operations, the Measuresoft Alpha Server manages all aspects of Alpha communications; initializing and programming the Alpha modules, commanding them to take measurements, receiving the incoming channel data and constantly monitoring the system for errors.

Data Acquisition from Alpha Devices

Copyright ©2017 Measuresoft Development Ltd. All Rights Reserved.

Features

Compatible with legacy (XP) and current versions of Windows

Available as 32-bit or 64-bit version

Compatible with the OPC Data Access v1.0 and v2.0 standards

Compatible with the Excel RTD standard

Supports multiple Alpha Networks on a single PC using multiple RS485 interfaces

Interrogation of Alpha network for modules and reading of configuration

Slow and fast acquisition speeds

Server can act as controller or listener to Alpha networks, allowing other systems to be on the Alpha network

Diagnostic channels and debug output for monitoring Alpha communications

Full traceability of all configuration changes to Alpha

Dynamic calibration and reconfiguration of Alpha channels e.g. modes, tags etc. without having to stop OPC clients

Support for auxiliary outputs

Support for all Alpha module types and all associated measurement modes and all Alpha settings

630A – Phase decoder, counter and status module

631 – Phase decoder, counter and relay output module

634A – Phase decoder, counter and isolated analog module

636 – Phase decoder, counter, isolated analog and relay output module

636A – Phase decoder, counter, isolated analog and relay output module

640 – Analog output module

910 – Thermocouple module 20 channel

911 – Voltage and current input module

912 – RTD, resistance, strain and voltage input module

913 – RTD, resistance, strain voltage and thermocouple input module

914 – Strain gauge, voltage and thermocouple input module

917 – RTD, resistance strain voltage and thermocouple input module

930 – 930 Digital status module

931 – 931 Digital input/output module

933 – Event input module

934A – Phase decoder, counter and isolated analog module

934S – Phase decoder, counter and isolated analog module

940 – Analog output module



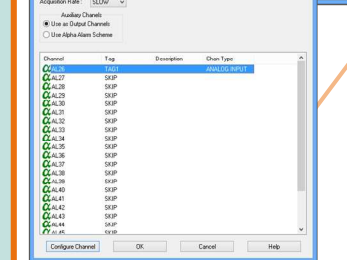
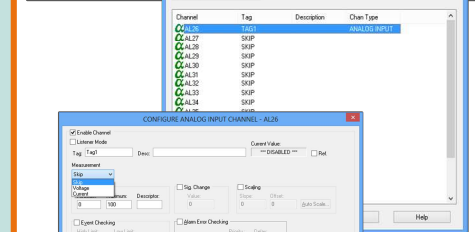
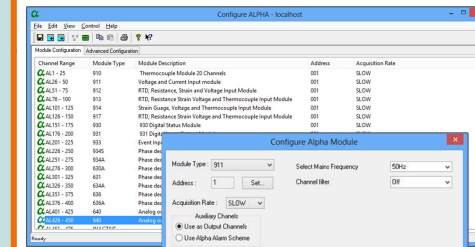
Key Benefits

Connects third party systems to Alpha networks

Allows you to use Excel as a data monitoring tool

Eliminates the need for customised programming of, or replacement of your software

Allows you to support Alpha hardware on modern PC platforms into the future, without major investment in replacement software or hardware



‘Offering fast, robust and secure data acquisition from a wide range of supported Alpha devices’

Partnership Courtyard,
Ramparts Road,
Dundalk, Ireland
Tel: +353 42 9332399

sales@measuresoft.com

2626 South Loop West, Suite 620,
Houston, TX, 77054,
USA
Tel +1 281 969 7529

www.measuresoft.com

