

WITS DRIVERS



What is WITS?

Measuresoft's WITS Input and Output drivers are plug-in device drivers for ScadaPro servers. They enable fast and secure data acquisition from a wide range of supported WITS devices.

WITS (Wellsite Information Transfer Specification) is a communications format used for the transfer of a wide variety of wellsite data from one computer system to another.

Providing Fast and Secure Data Acquisition

Features

Support for up to 100 record types including pre-defined types

Serial and TCP/IP transport

Echo feature to re-transmit captured WITS input

Timeouts to flag transmission errors

Error value

Aggregates data from different sources and multiple feeds.

Multiple feeds to/from multiple servers provided by one licence.

Benefits

Industry-standard compatibility with third-party tools and applications

Works on existing ScadaPro servers and does not require dedicated PCs

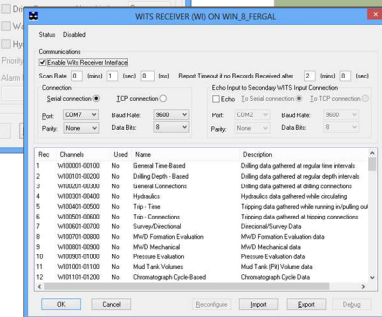
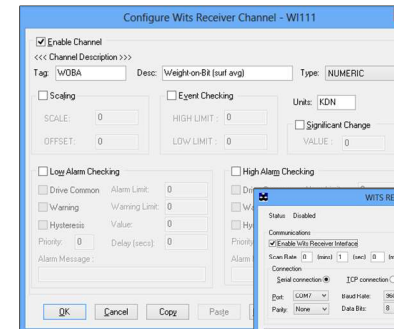
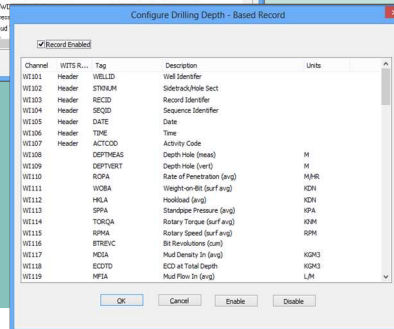
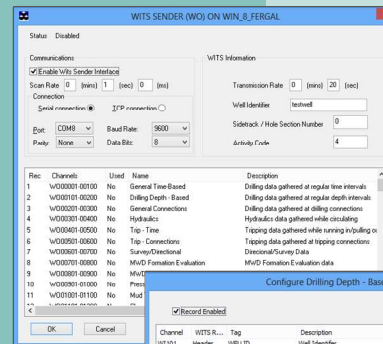
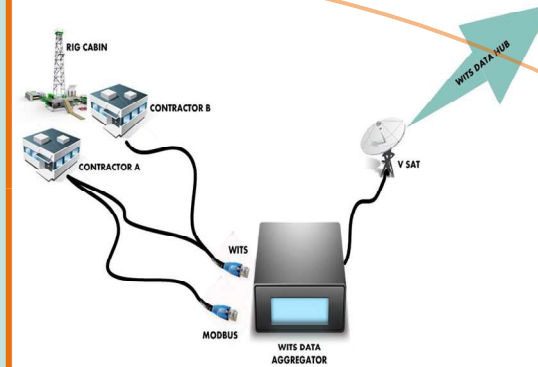
Reduced set up time, thereby reducing costs

Real-time feed of WITS data

Facilitates the sharing of information (used by many companies).

Can Be effortlessly adopted and implemented by any company.

Can be adapted to meet new requirements as technology changes



Partnership Courtyard,
Ramparts Road,
Dundalk, Ireland
Tel: +353 42 9332399

sales@measuresoft.com

2626 South Loop West, Suite 620,
Houston, TX, 77054,
USA
Tel +1 281 969 7529

www.measuresoft.com

